

Aalborg og cementen

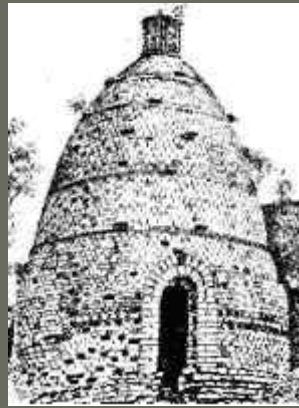


Henning Bender og Morten Pedersen

Aalborgbogen 2006
2



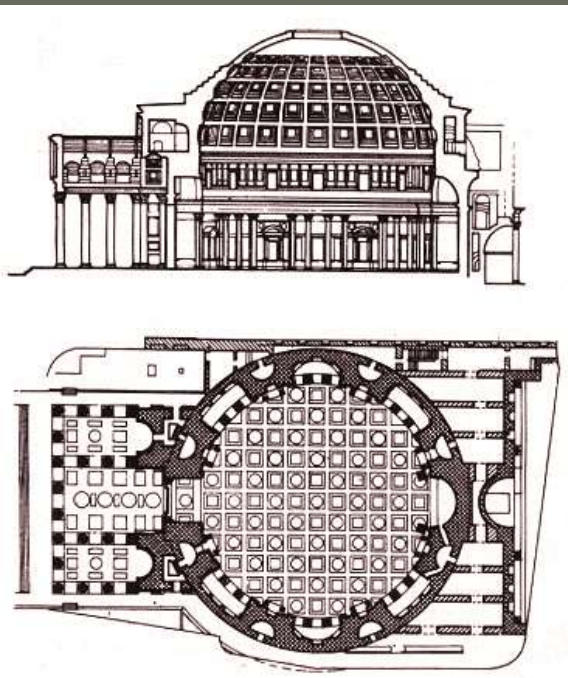
Trajan kejser 117-138



Aspdins cementovn



Joseph Aspdin 1778-1855



Pantheon i Rom, år 126



Patent på Portland Cement 21.10.1824

Cementfabrikker i Danmark

Arbejdere/Produktion 1926

- Vang, Aalborg. 1854-1860
- Fredens Mølle, Amager, 1860-1870
- Hertha, Ringsted, 1868-1887
- Rødvig, Stevns, 1870-1890
- Cimbria, Mariager, 1875-1919
- Dania, Mariager, 1887-1980 (FLS 1917) A 143 / P 34.000 t
- Rørdal, Aalborg, 1889- (FLS 1889) A 641 / P 174.000 t
- Danmark, Aalborg, 1898- (1979)-2004
- (FLS 1904) A 99 / P 26.000 t
- Norden, Aalborg, 1901-1940 (FLS 1904) A 250 / P 76.000 t
- ØK, Nørre Uttrup, 1908-1932 (FLS 1931) A 479 / P 123.000 t
- Kongsdal, Mariager, 1908-1933 (FLS 1914) A 113 / P 28.000 t
- DAC, Lindholm, 1913-1978 (FLS 1974) A 357 / P 108,000 t
- Karlstrup, Køge, 1958-1977 (FLS 1958)

AALBORG STRÆKSTYKKE KORT
over
Aalborg og Nørresundby

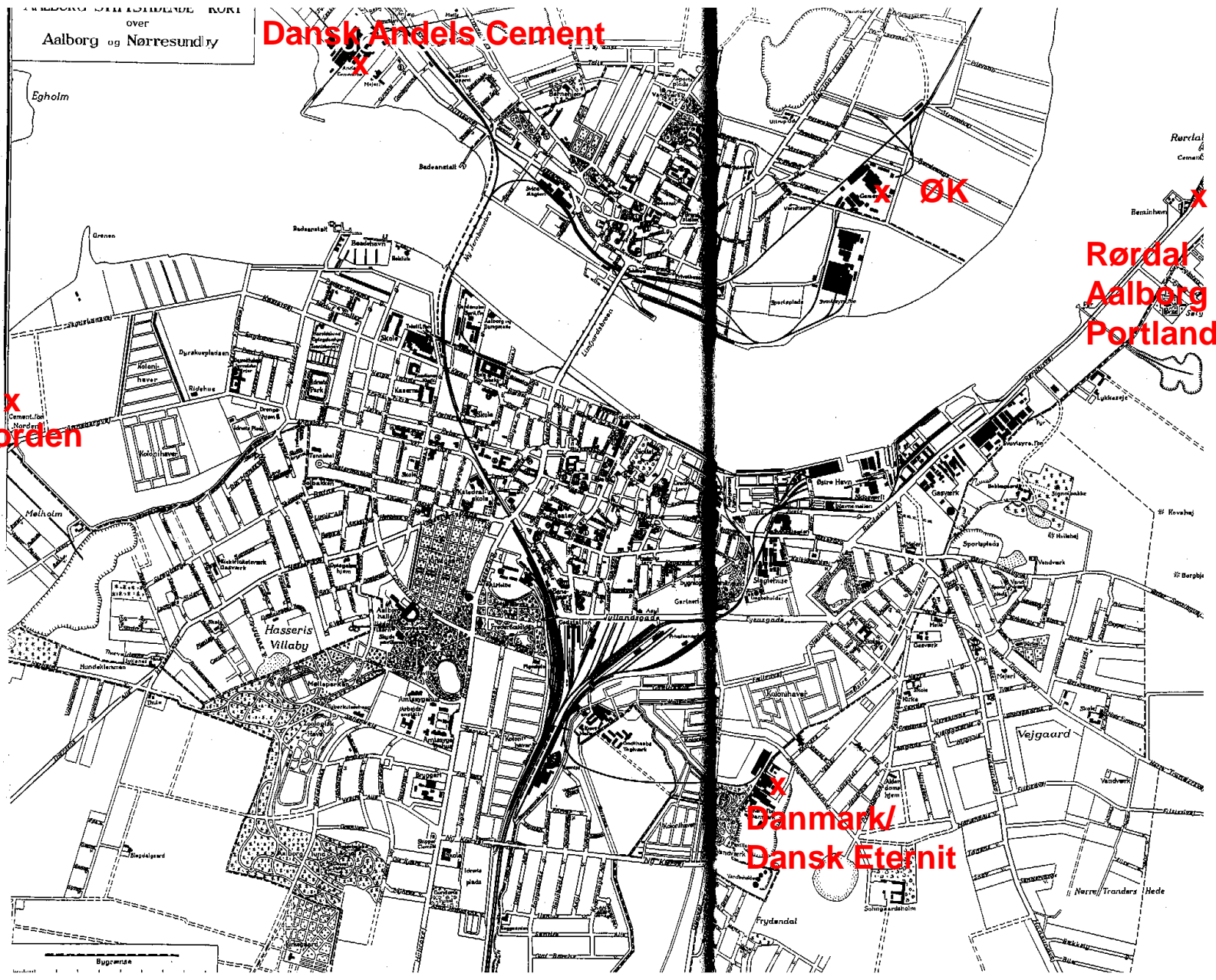
Dansk Andels Cement

X
Norden

X
Danmark/
Dansk Eternit

X ØK

X
Rørdal
Aalborg
Portland



Aalborg 1937

Maskinkraft i Aalborgs Industri

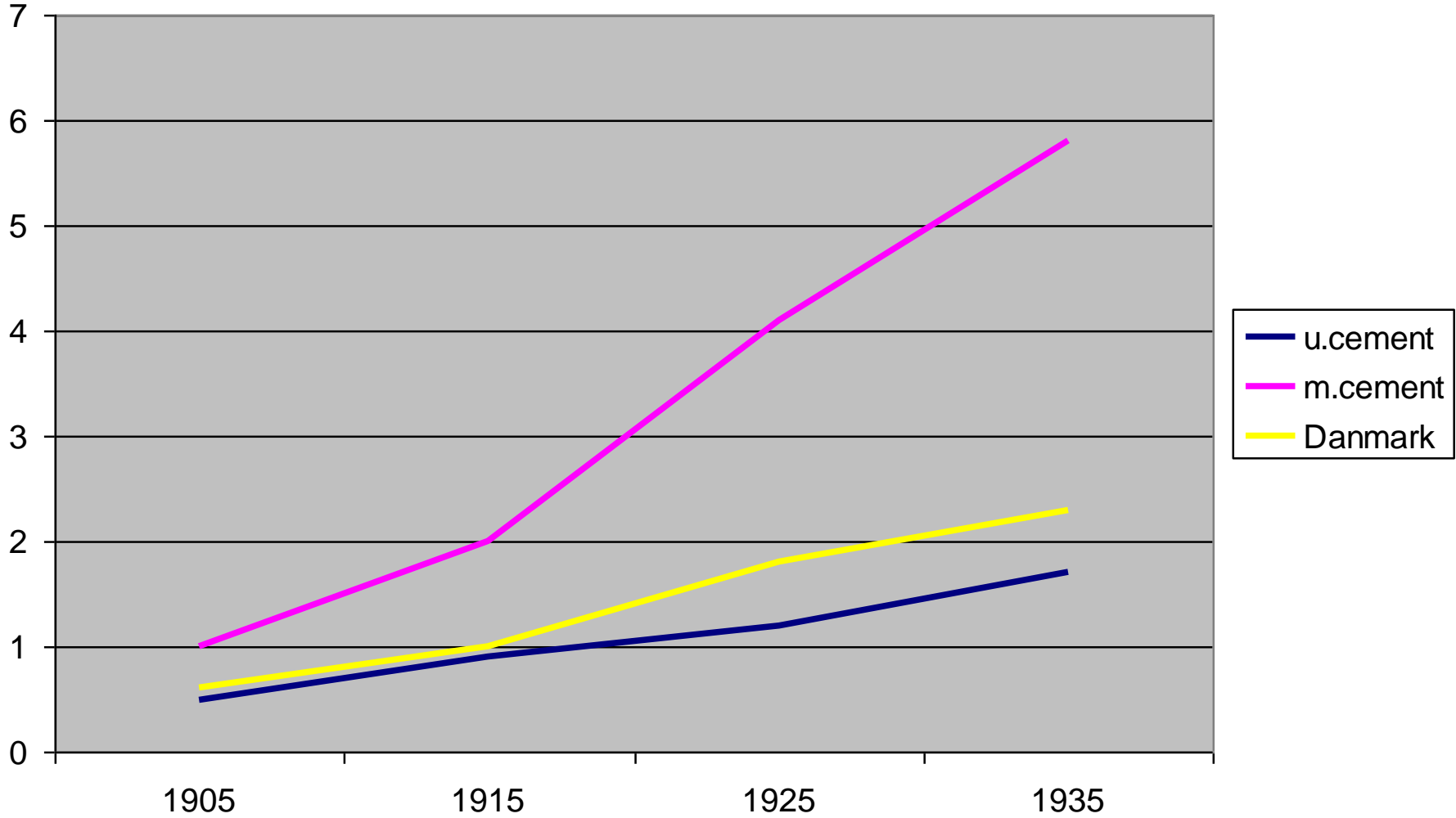
1935 sammenlignet med Århus og Odense

- 1841: 4 HK (Sprit 100%)
- 1850: 41 HK (Sprit 60 %)
- 1862: 104 HK (Sprit 50%, Mel 30 %)
- 1872: 189 HK (Sprit 25 %, Mel 25 %, Tekstil 24 %)
- 1882: 329 HK (Sprit 20%, Mel 18 %, Træ 17 %, Tegl 11 %)
- 1906: 4672 HK (Cement 55 %, Tekstil 17 %, NN 15 %, Metal 4 %)
- 1925: 32380 HK (Cement 72 %, Tekstil 2 %, NN 9%, Metal 7 %)
- 1935: 47986 HK (Cement 70 %, Tekstil 4 % , NN 11 %, Metal 7 %)

- 1935: 27930 HK ÅRHUS (NN 25 %, Kemi: 34 %, Metal 18 %)
- 1935: 26772 HK ODENSE (NN 27 %, Tekstil 14 %, Metal 25 %)

- NN = Nærings- og Nydelsesmiddelindustri

Maskinelle hestekræfter pr. ansat industriarbejder i Aalborg



Industribyggeri i Aalborg

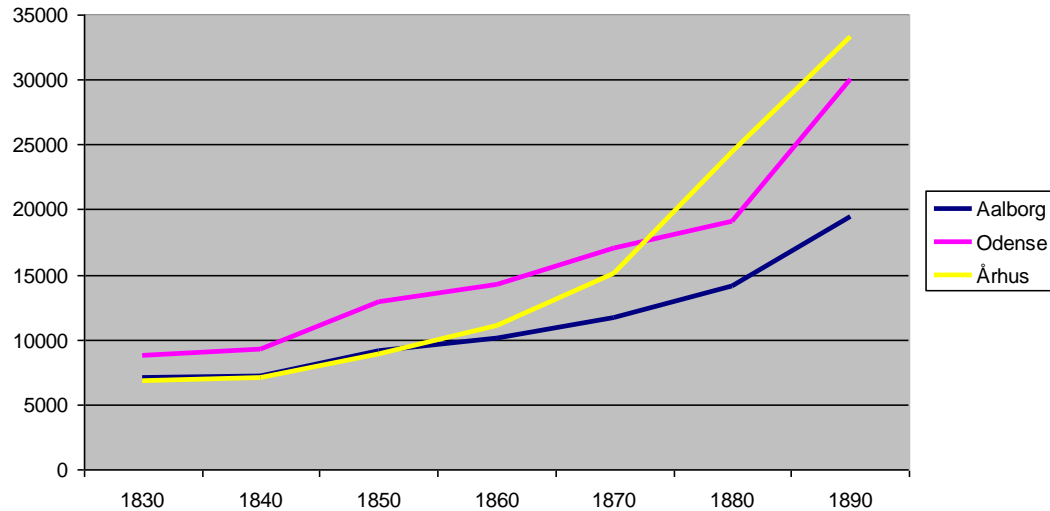
- 1884-1891: 2 svineslagterier, 1 oliemølle, 1 margarinefabrik – samt første Rørdal
- 1897-1901: Tobaksfabrik, bryggeri, glasværk, tekstilfabrik, papirvarefabrik, maskinfabrik og 3 cementfabrikker
- 1908-1918: 2 svovlsyrefabrikker, 2 cementfabrikker og et stålskibsværft.
- Ca. 1930: cementfabrik bliver eternitfabrik



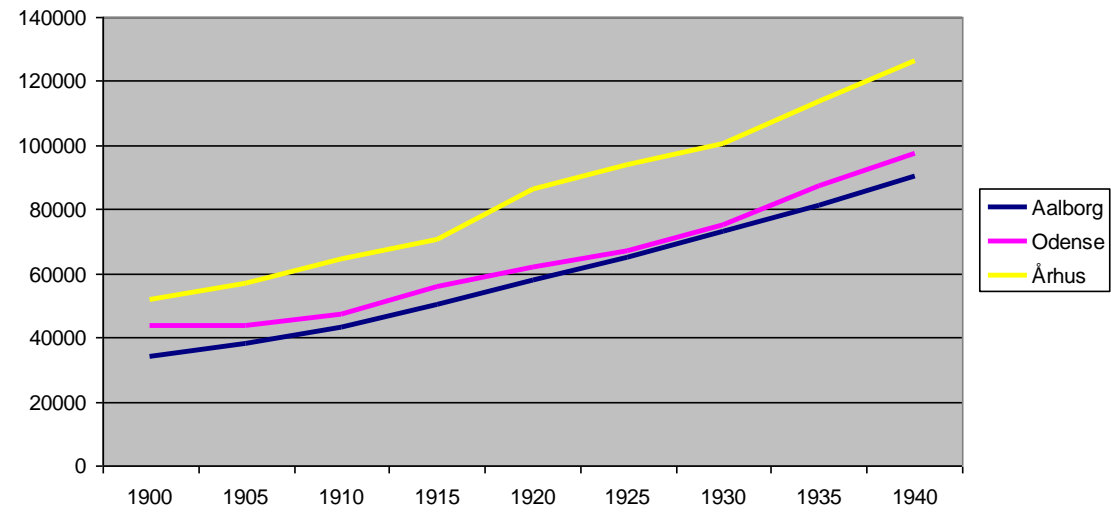
Aalborg fra Signalbakken, 1881 og 1920

Befolkningsudvikling

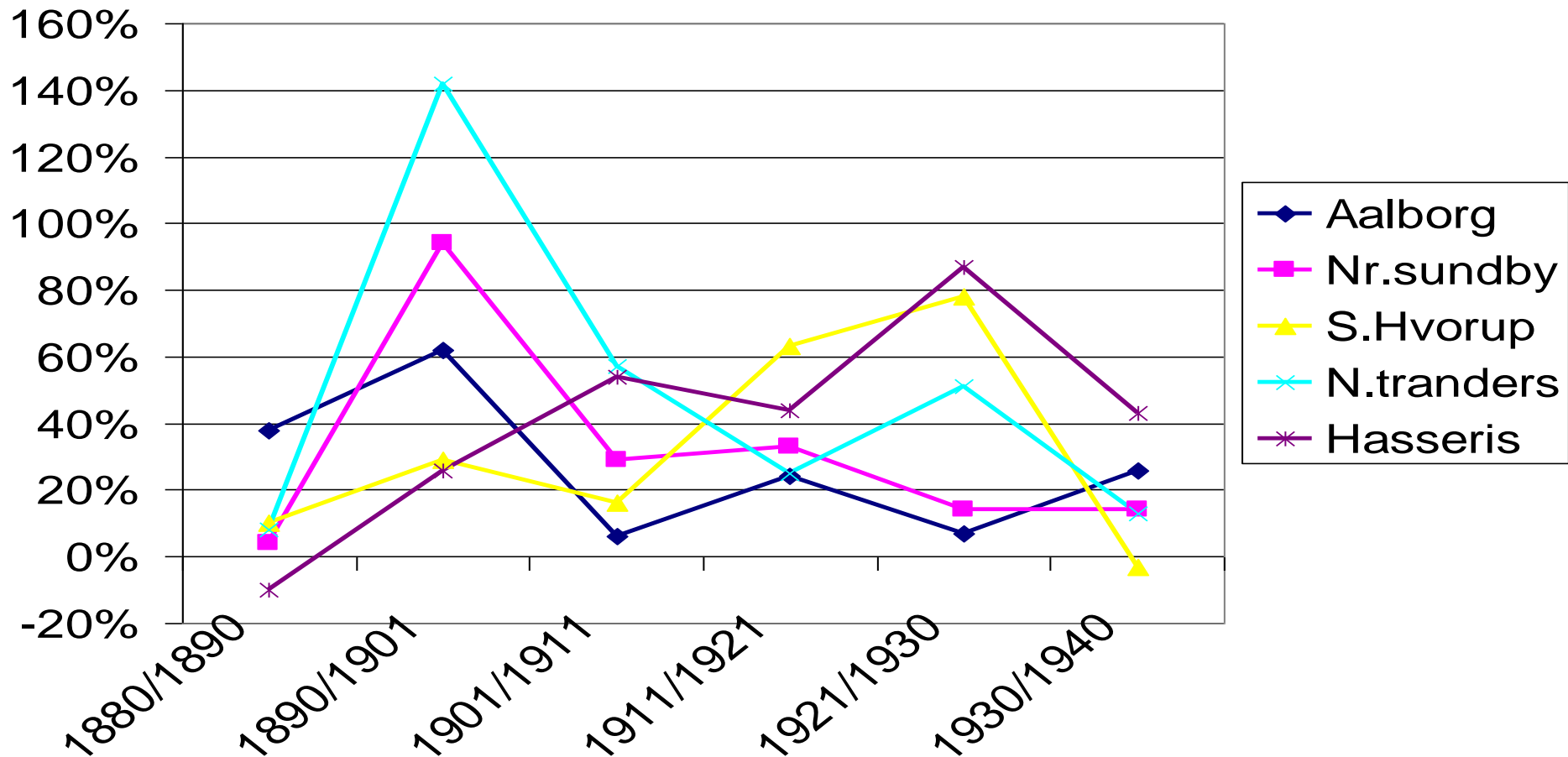
Befolkningsudvikling, Aalborg, Odense, Århus



Befolkningsudvikling i Aalborg, Odense og Århus "storbyområder" 1900 - 1940



Befolkningstilvækst pr. tiår i Aalborg og omegnskommuner 1880-1940





Korsgade fra Kattesundet ca. 1925



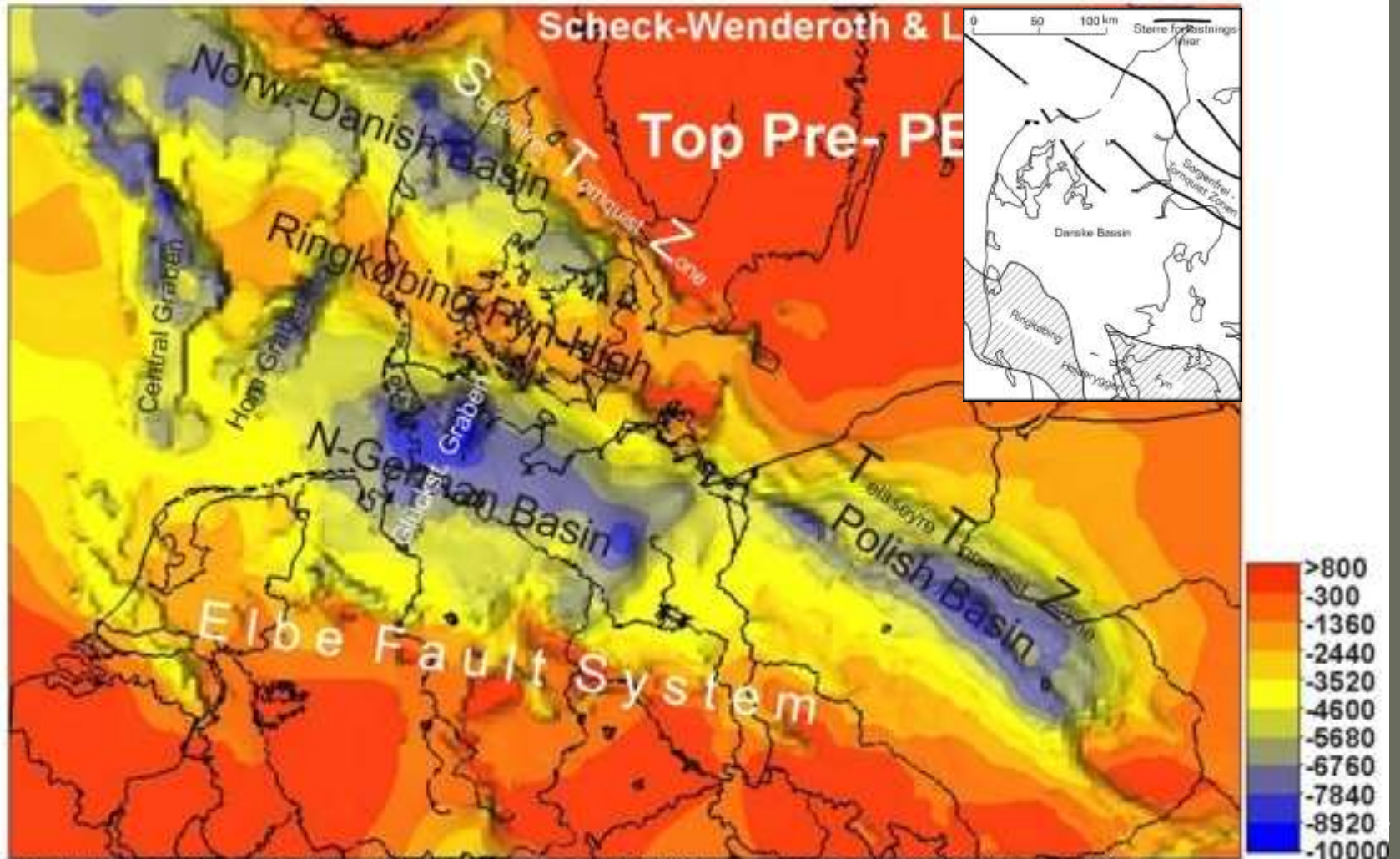
Banegårdspladsen i Aalborg 1901

Forudsætninger

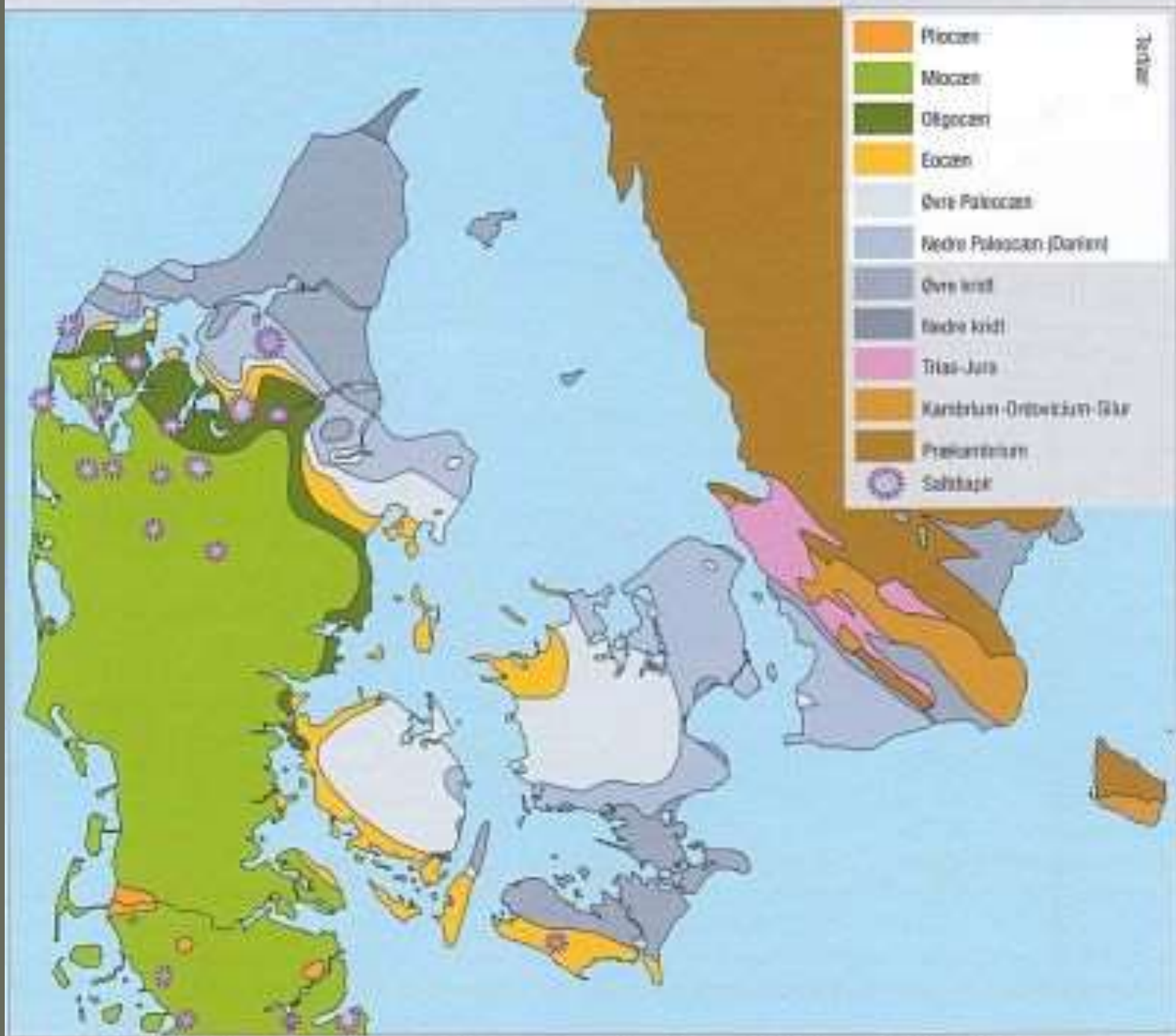
- Naturens forudsætninger
- Sejladsen på Limfjorden
- Befolkningsunderlaget

Dybden til Nordeuropas grundfjeld

Major structural elements of the Central European Basin System

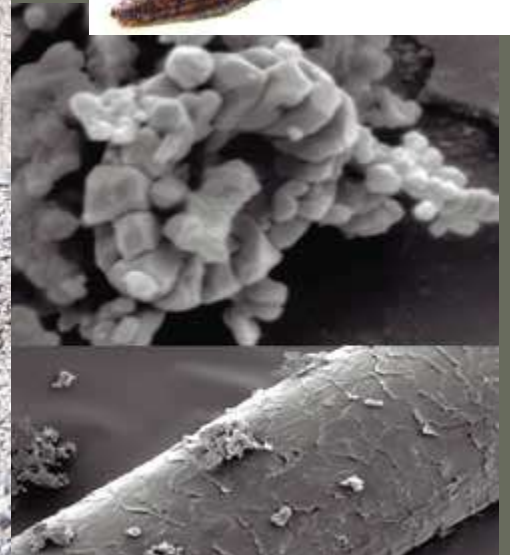
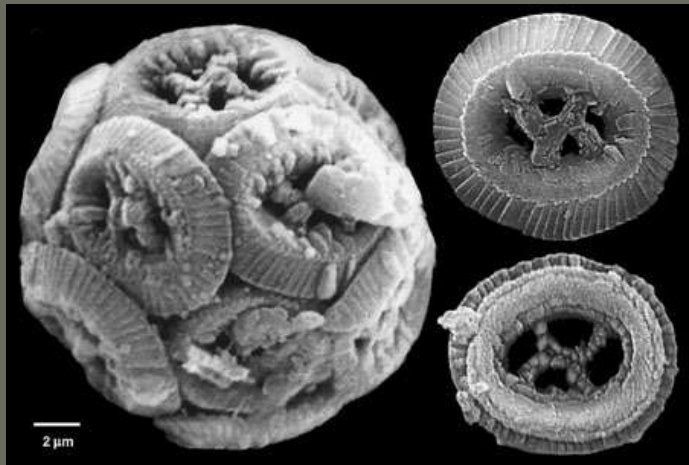


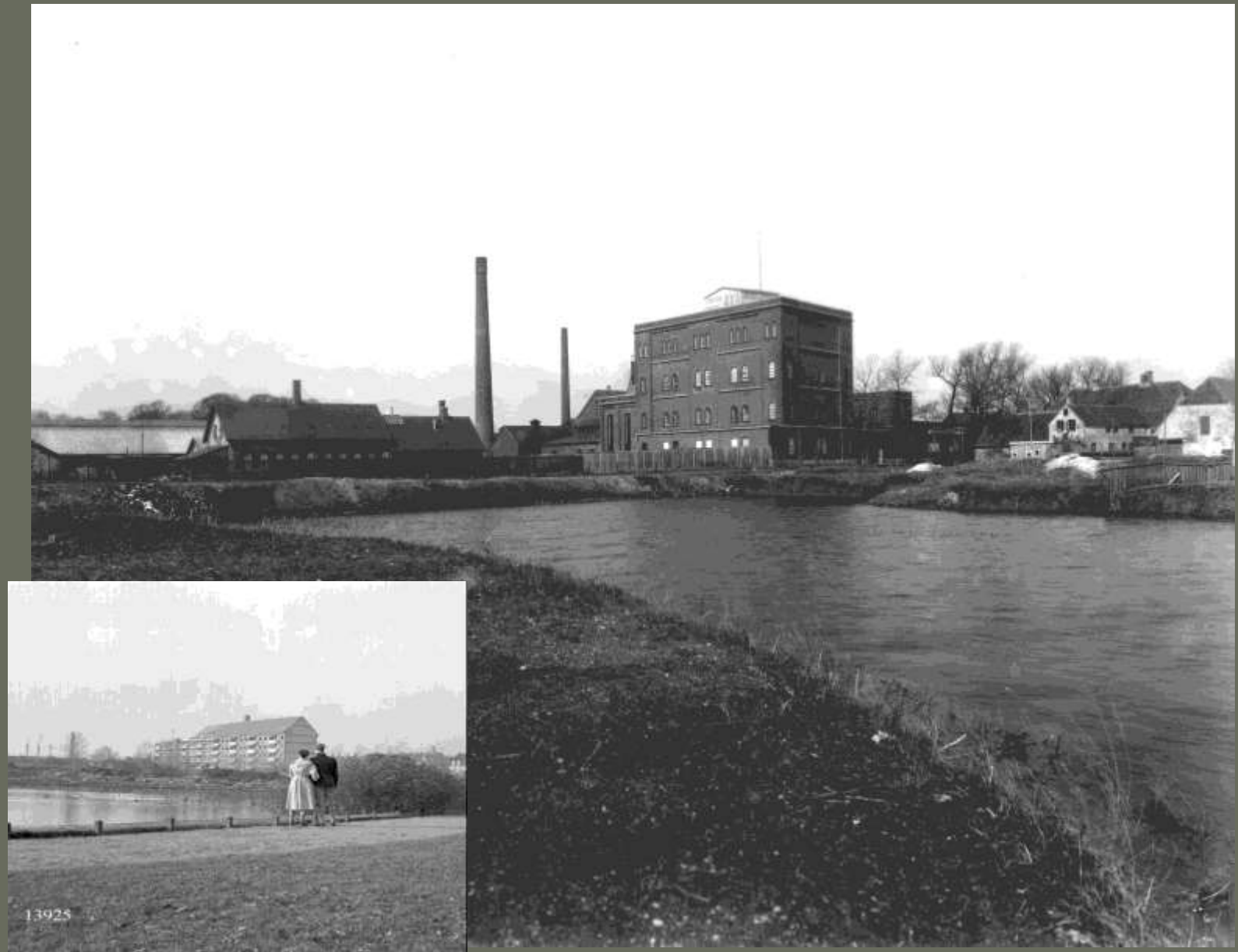
compiled from Scheck & Bayer 1999, Lamarche et al., 2003, Lockhorst et al., 1998; Vejbaek, 1997



Kortet viser hvilke geologiske perioder sedimenterne der udgør undergrundens overflade stammer fra.
 Kilde: Geografi, Fag og undervisning 1999.

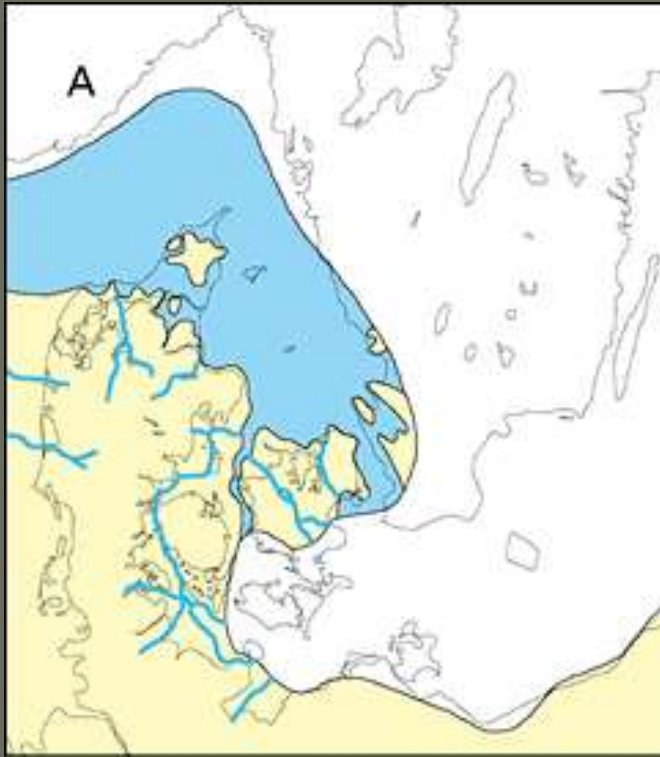
Kridttidens dyreliv





Vangs teglværk 1919 (1954)

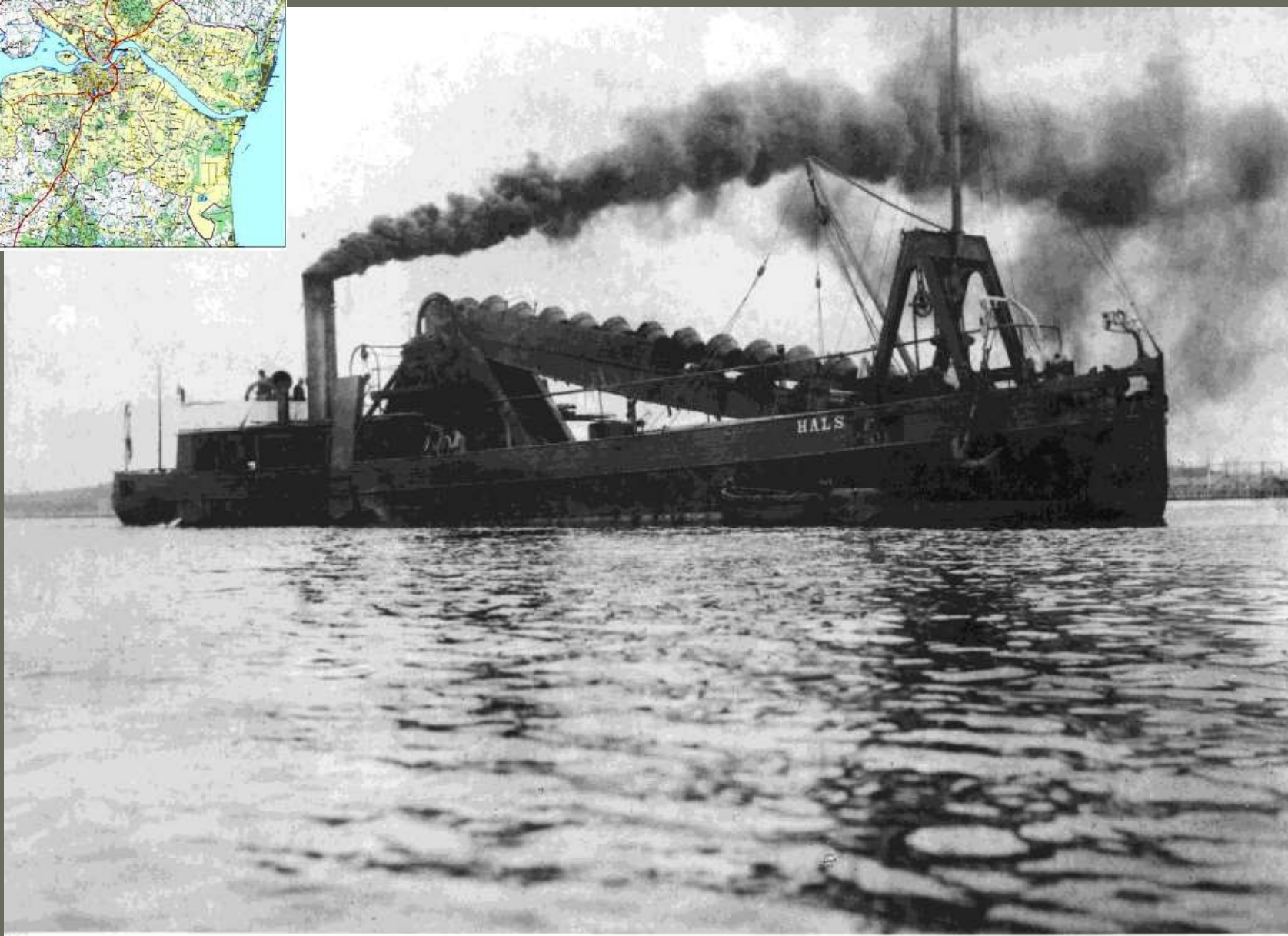
Seneste Istid



For 15.000 år siden

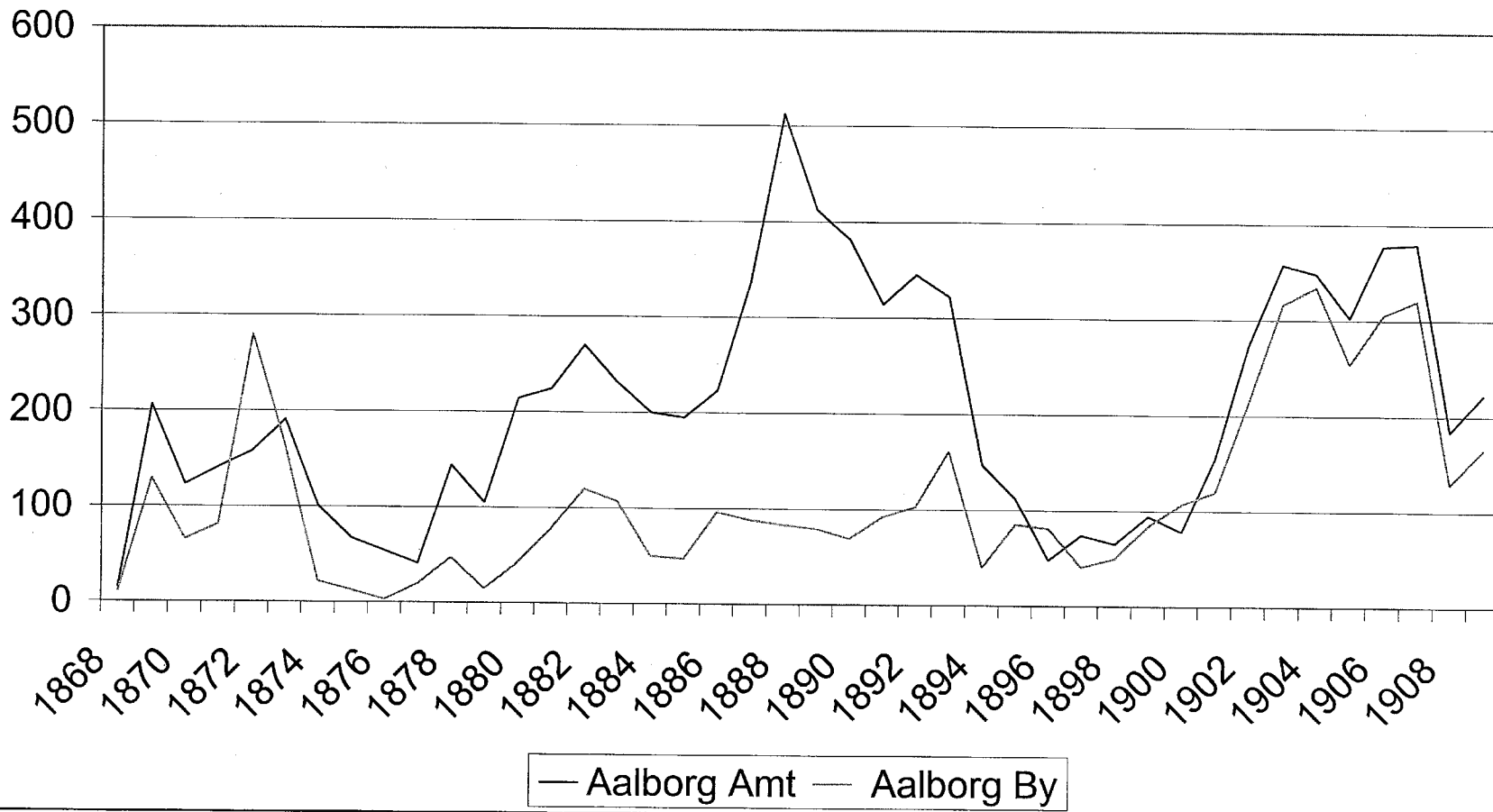


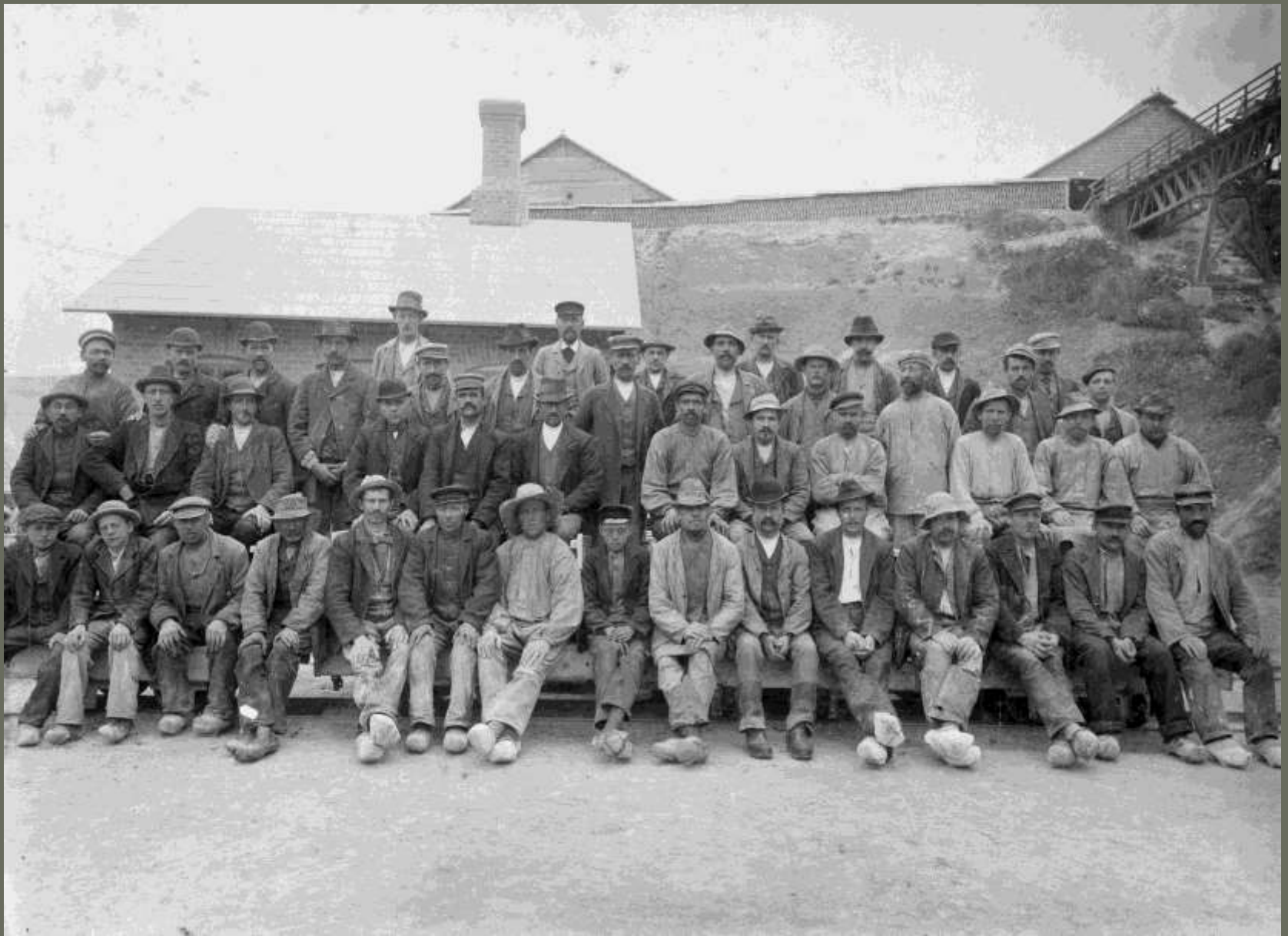
For 11.000 år siden



Dampmuddermaskinen "Hals", 1899

Udvandring 1868-1909 Aalborg amt og by





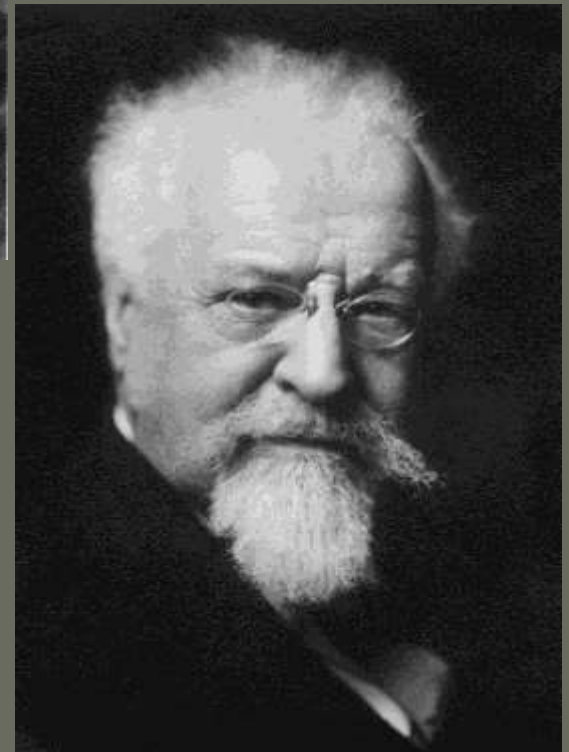
Arbejdere på Rørdal 1900



Hans Holm 1838-1903



F.L. Smidth
1850-1899



Poul Larsen 1859-1935₂₆



16509

1890



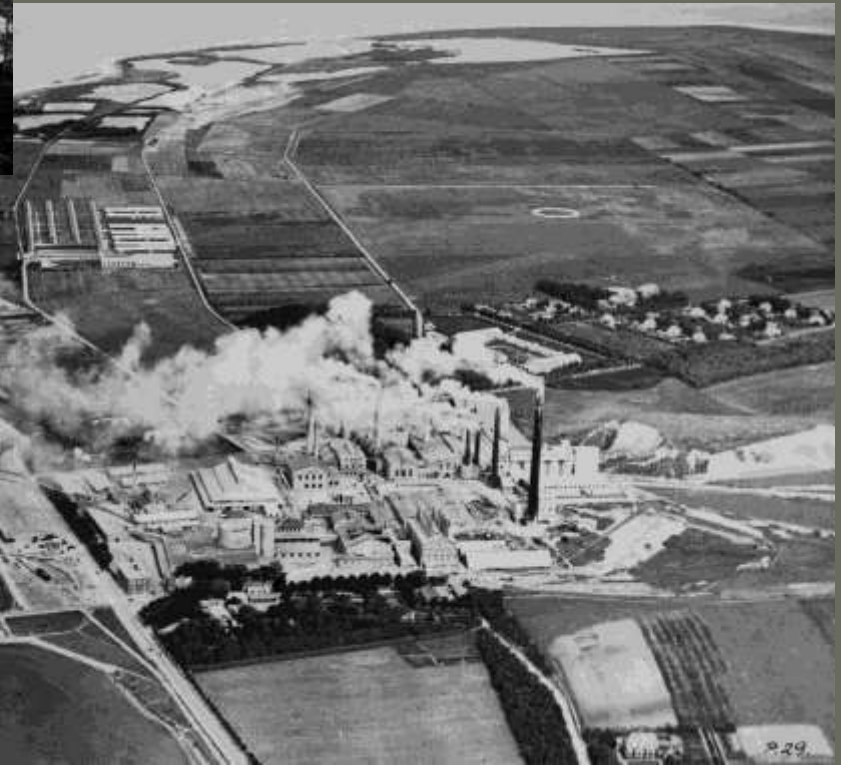
1896

Rørdal

1921

10305

1936

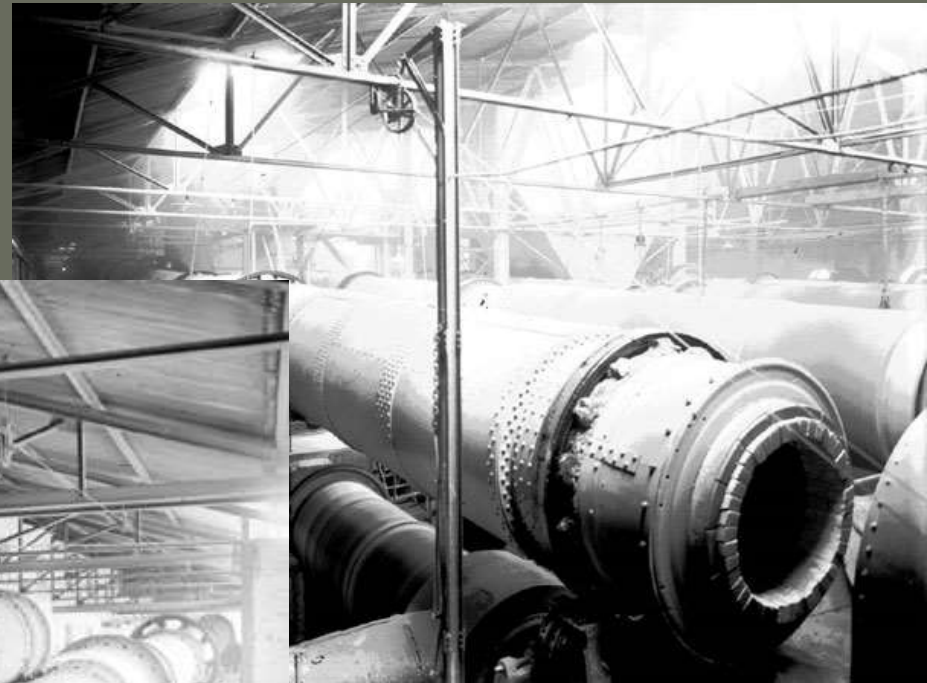


Roteroovne 1910



9634

Rørdal



Rørdal

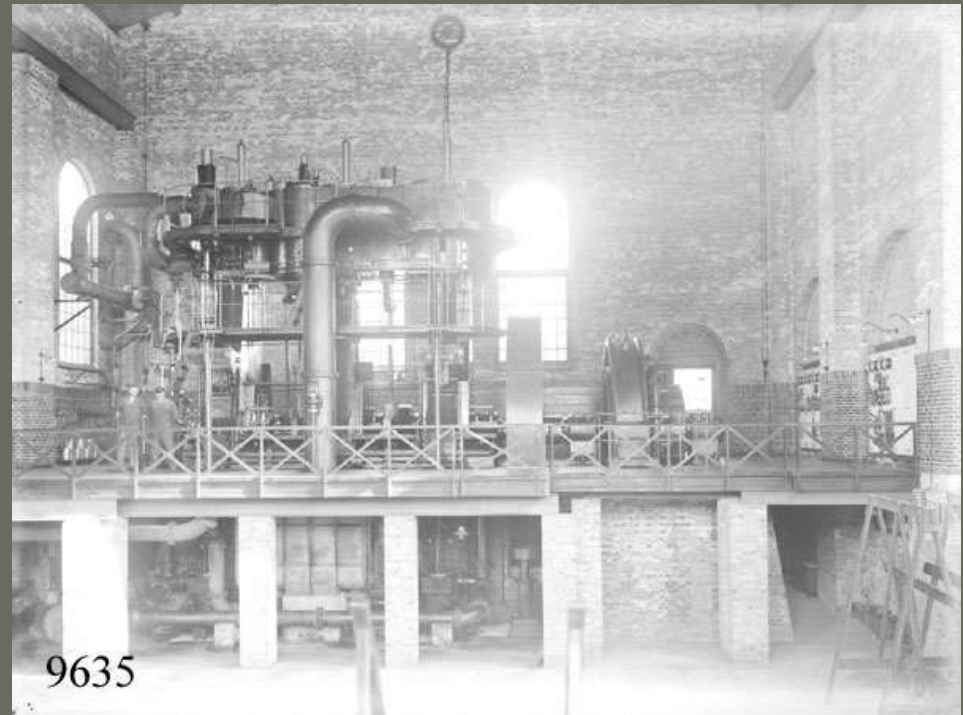
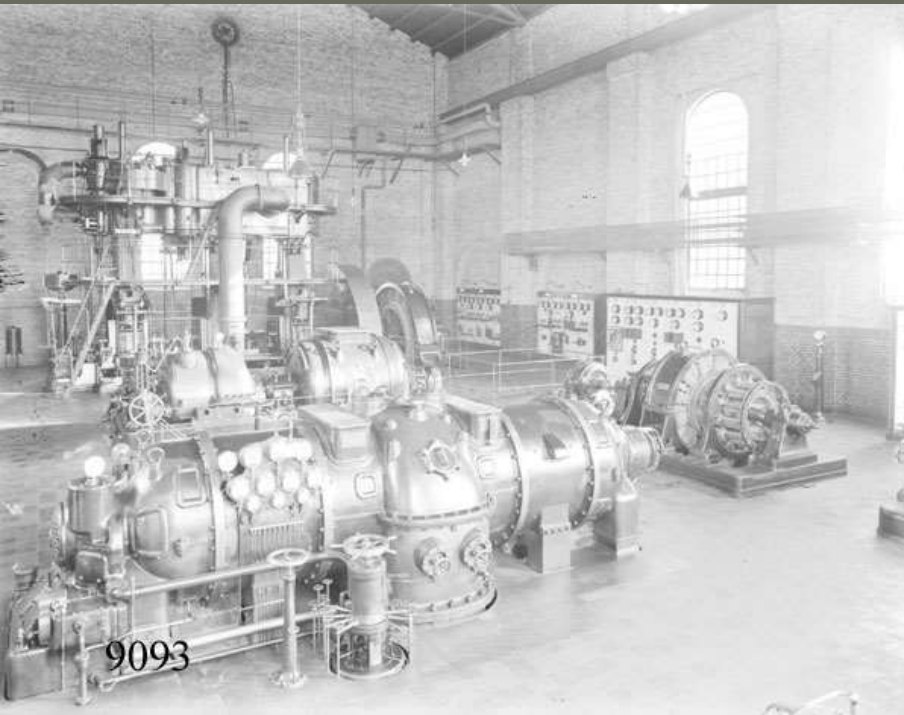


10542

ØK

29

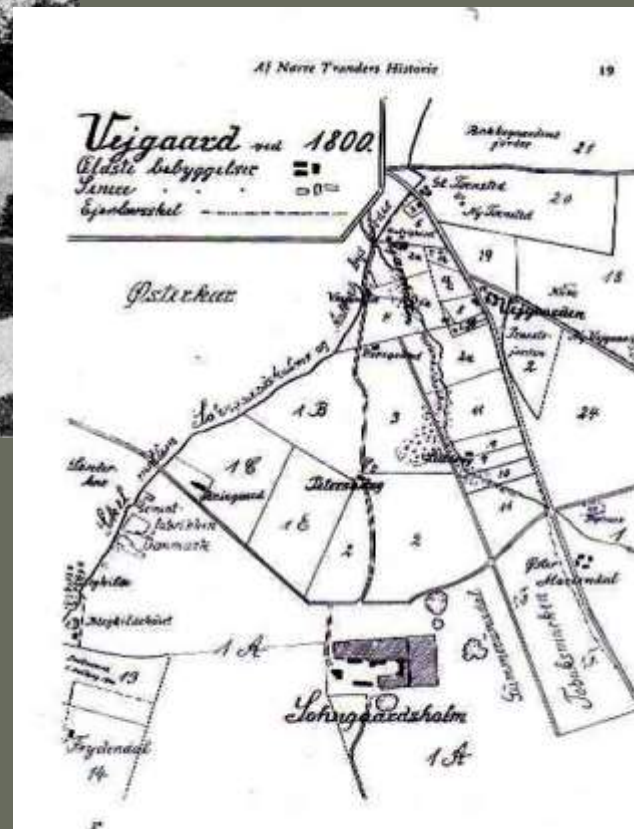
Maskinhal Rørdal 1910





El-tipvognstog 11.9.1910

Vejgaarden





Hadsundvej i Vejgaard 1904

Rørdal Arbejderby 1899

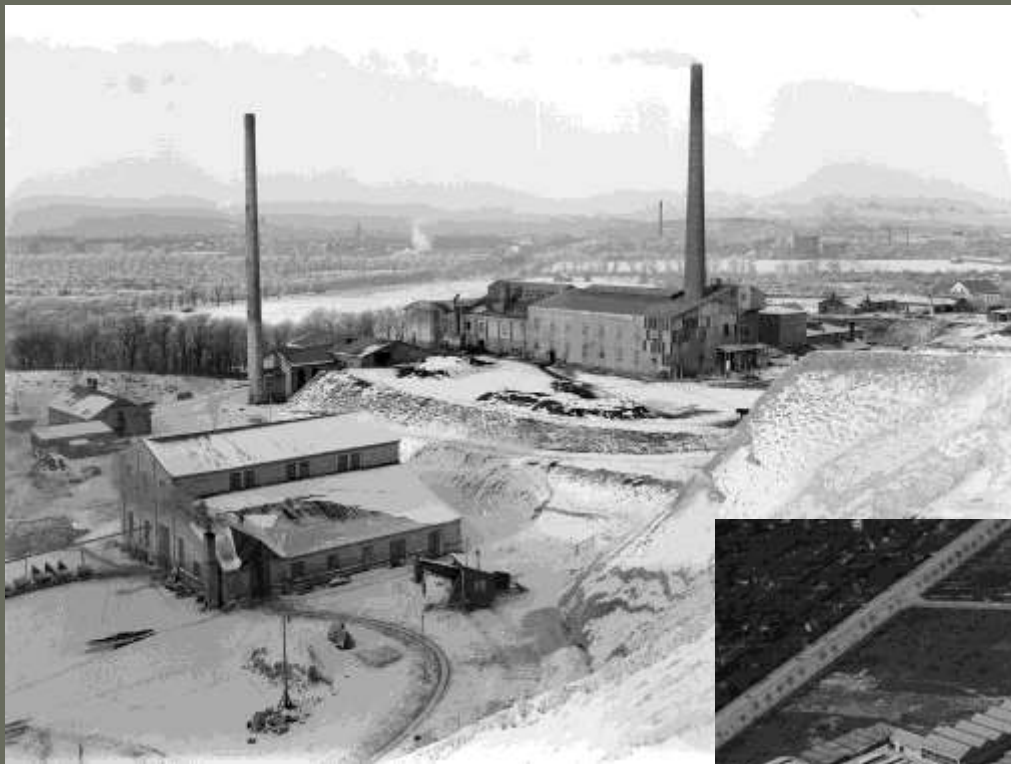


**Vejgaard set fra
Sohngaardsholm
1926**



Sohngaardsholm





"Danmark"
28.11.1923

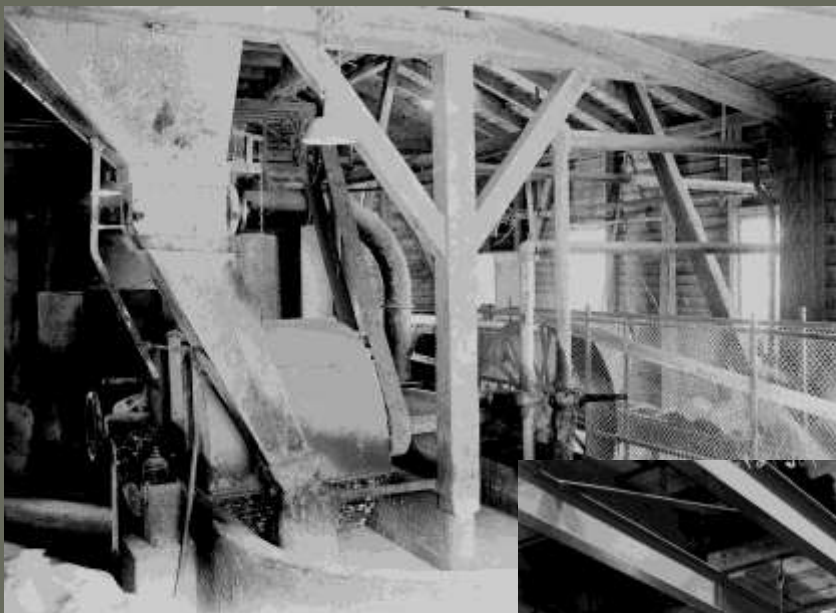
"Danmark" og
Eternitten 1936







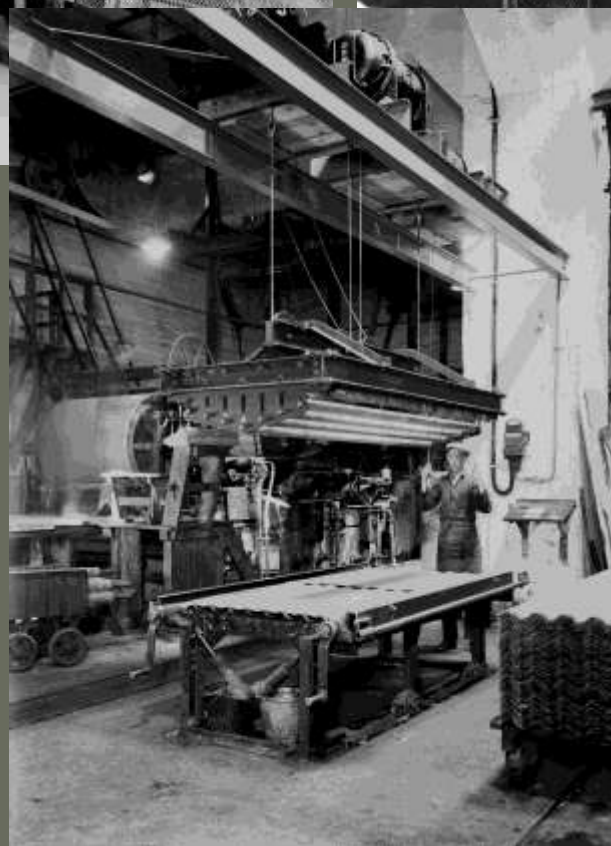
Lastbiler på "Danmark" 5.12.1919



**Blandekar for
cement,
Asbest og vand
19.5.1930**



**Pladevalse
For eternit
21.5.1929**



Bølgepresse for eternit, 5.8.1930

Blegkilde 1922



**Eternitfabrikken
og Blegkilde
1930**



Norden, 1901-(1940)



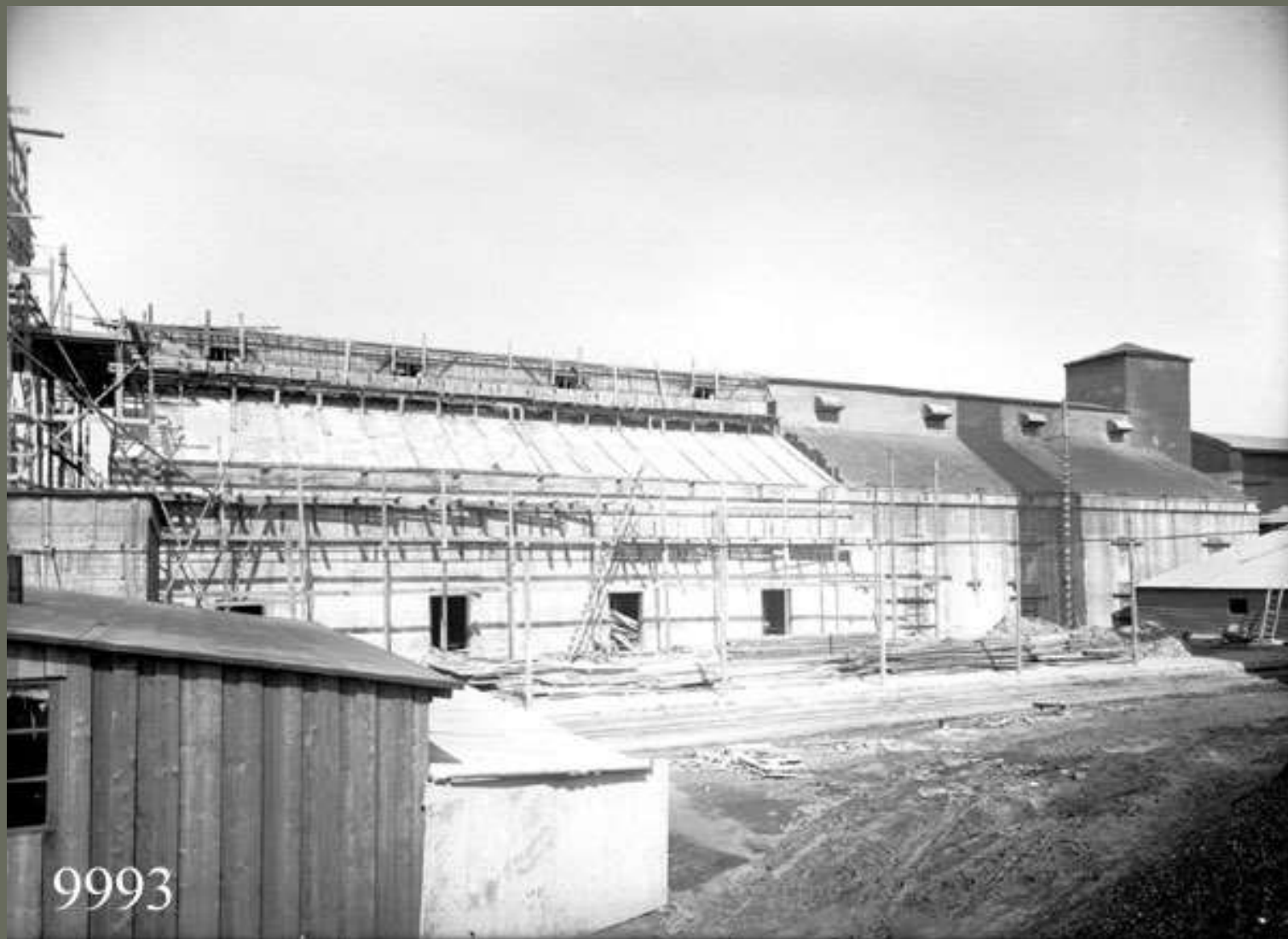
Fritz Karner, 8. december 1926

Tønnies 27.11.1908



9984

Tønnies 24.5.1909



NORDEN 1926





Cementfabrikken "Norden" 1938

Skandinavisk Aero Industri, Nordens Bødkeri 1939





Kridttunnel under Hasseris 1954



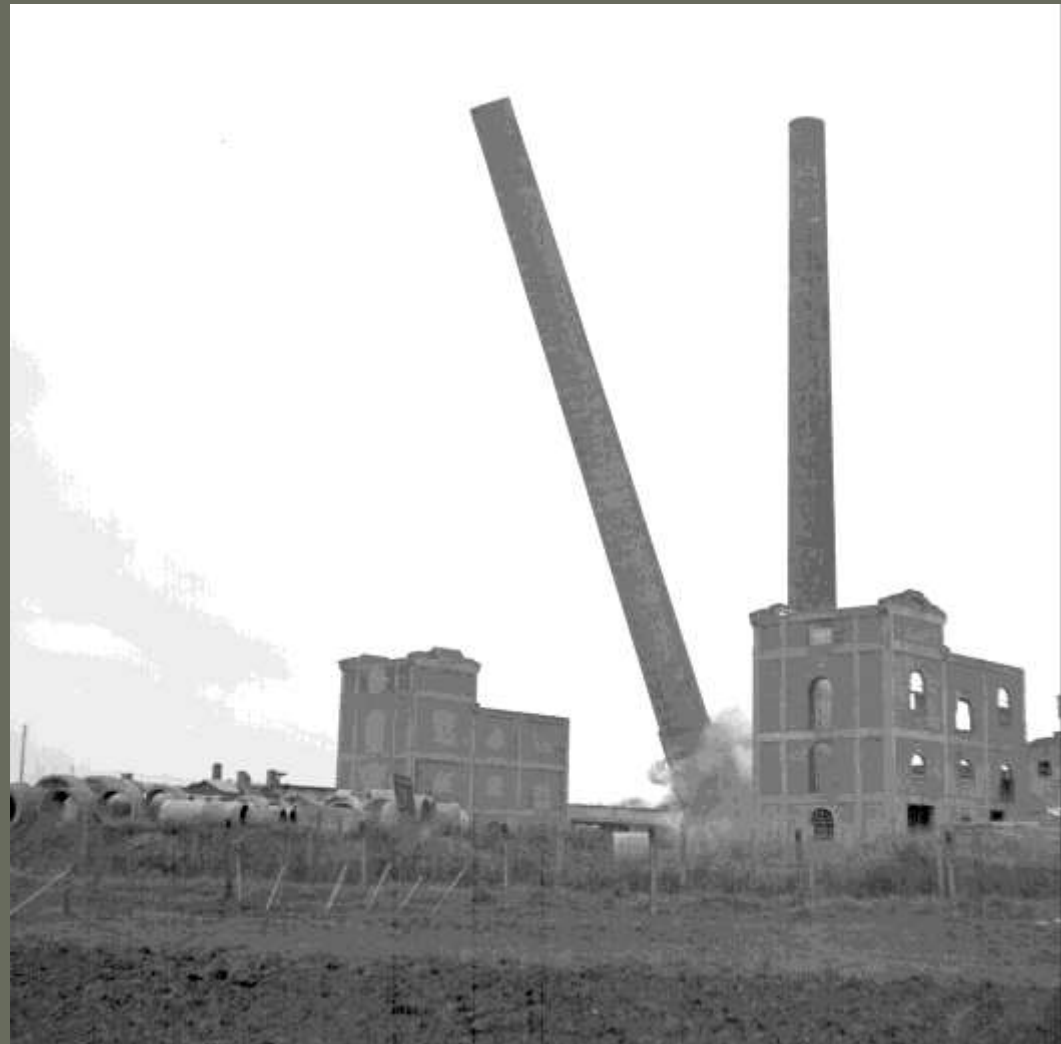
"Norden" med arbejderboliger 1936

14. Marts 1929, ØK





**ØK's cementfabrik
21.11.1912**



**Skorstenene sprænges
12.11.1953**

Fra skorstenene
på ØK 1930

Mod Skansebakken

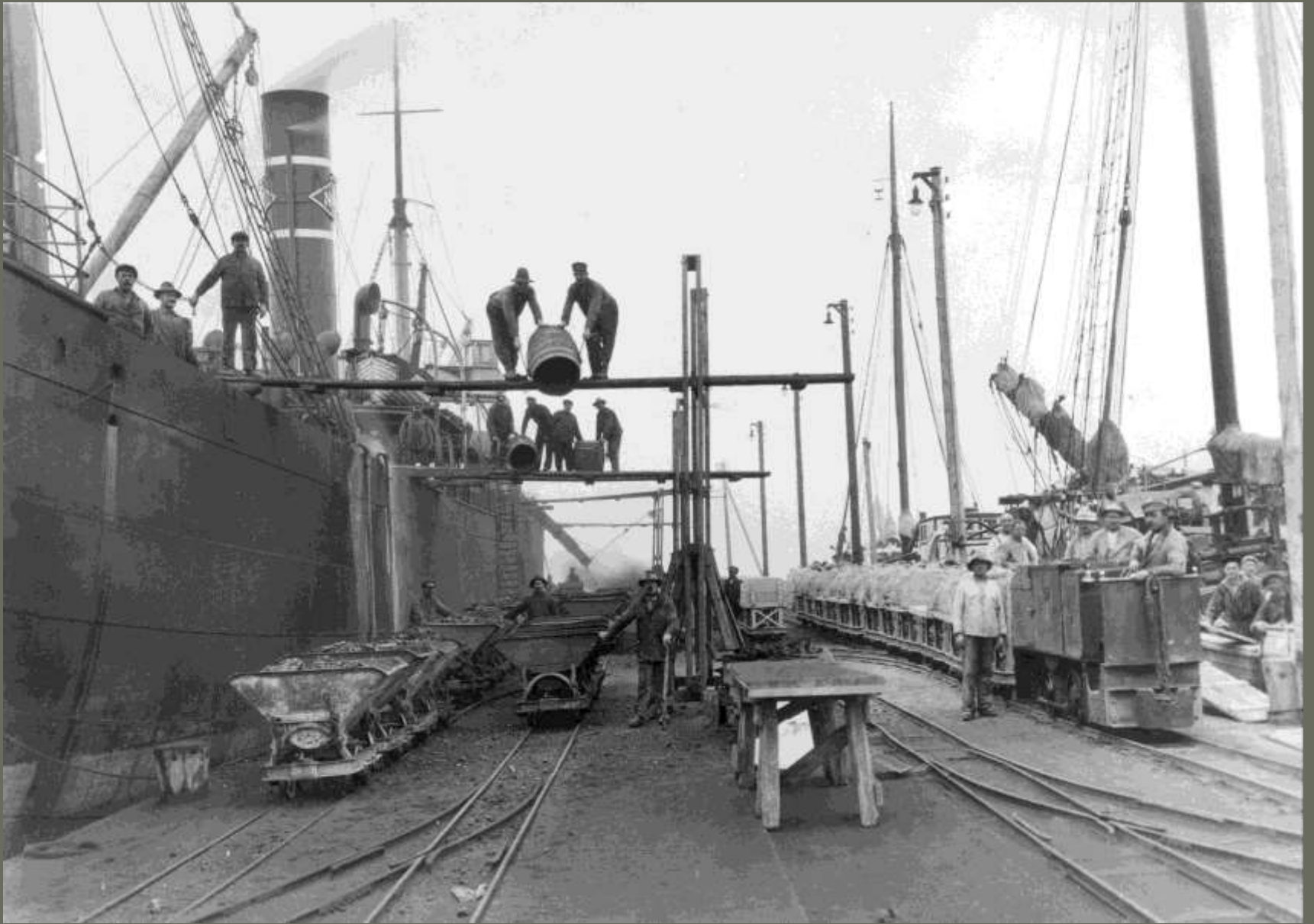


Mod Nørre Uttrup

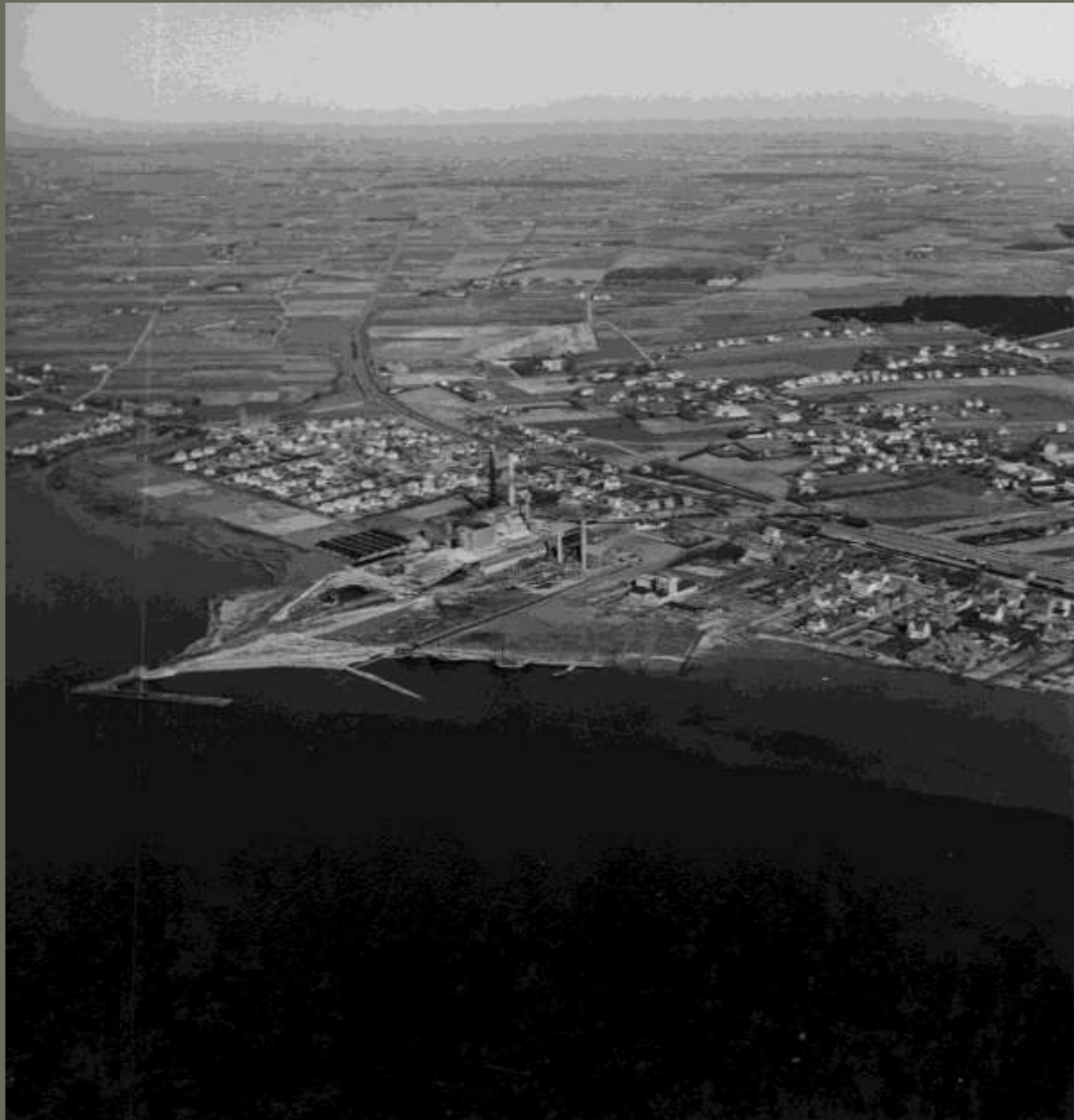




DAC
1938



DAC's havn 1930

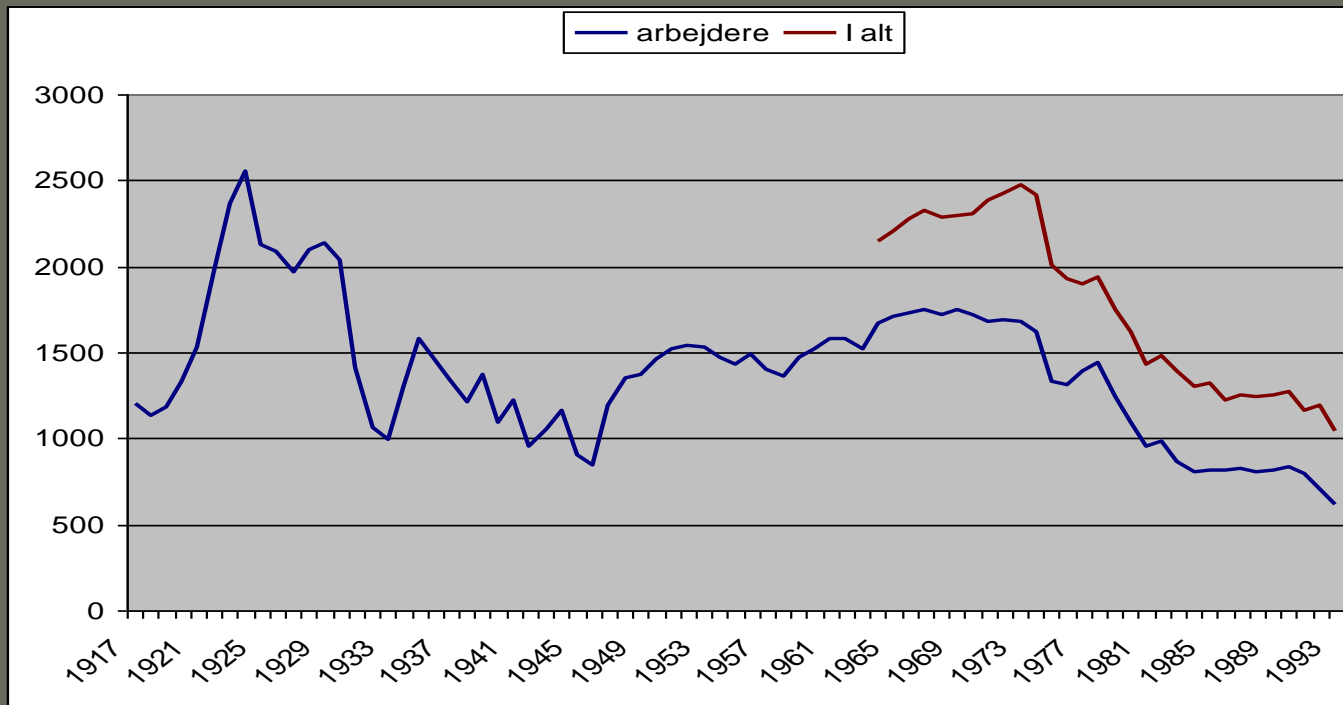
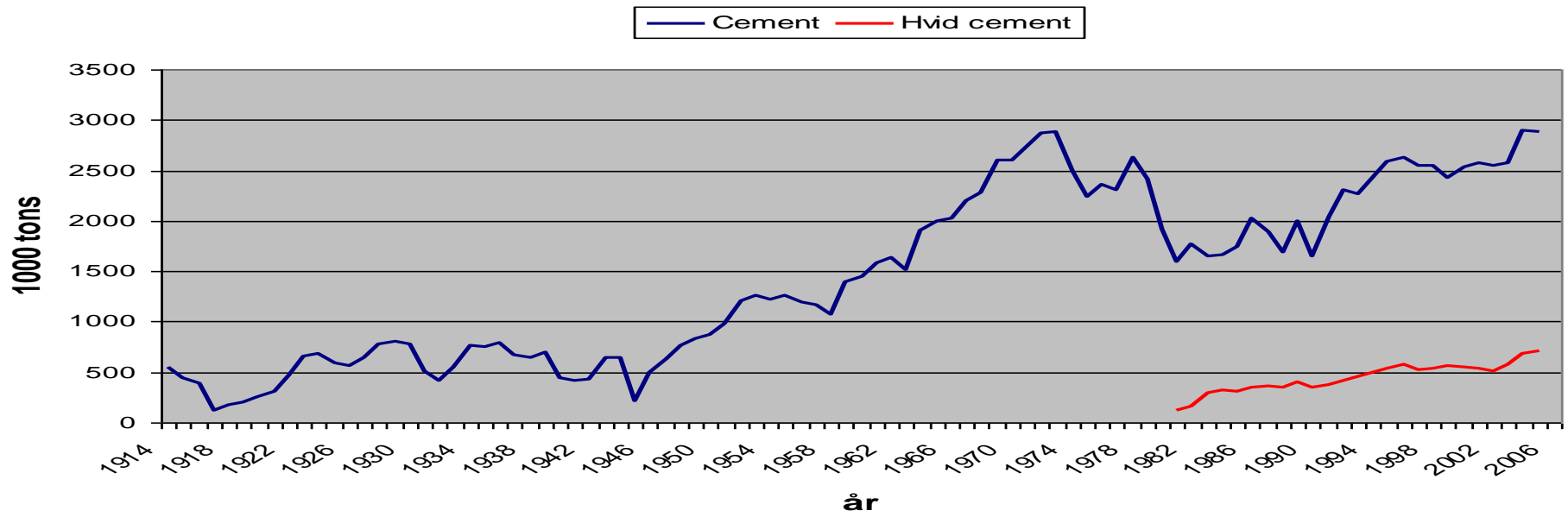


DAC og Lindholm 1936



Aalborg 1950

Cementproduktion i Danmark 1914-2005



Beskæftigede i Aalborg fordelt på Industri, handel og service 1940-2000

